



Ceiling-mounted ventilation system

[en] User manual and assembly instructions



I14RBQ8W0

Table of contents

Safety	2
Preventing material damage	4
Environmental protection and saving energy	4
Operating modes	5
Familiarising yourself with your appliance	5
Before using for the first time	6
Basic operation	6
Hob-based hood control	7
Home Connect	8
Cleaning and servicing	10
Troubleshooting	12
Customer Service	13
Accessories	14
Disposal	14
Installation instructions	14



Safety

Please read the safety information to ensure that you use the appliance safely.

General information

You can find general information about this instruction manual here.

- Read this instruction manual carefully. Only this will ensure you use the appliance safely and efficiently.
- This manual is intended for the installer and the user of the appliance.
- Follow the safety instructions and warnings.
- Keep the instruction manual and the product information safe for future reference or for the next owner.
- Check the appliance after unpacking it. Do not connect the appliance if it has been damaged in transit.

Intended use

Read the information on intended use to ensure that you use the appliance correctly and safely.

The appliance can only be used safely if it is correctly installed according to the safety instructions. The installer is responsible for ensuring that the appliance works perfectly at its installation location.

Only use this appliance:

- In accordance with these instructions for installation and use.
- In private households and in enclosed spaces in a domestic environment.
- Up to an altitude of max. **2000 m** above sea level.

Do not use the appliance:

- With an external timer.

Restriction on user group

Avoid risks to children and vulnerable persons.

This appliance may be used by children aged 8 or over and by people who have reduced physical, sensory or mental abilities or inadequate experience and/or knowledge, provided that they are supervised or have been instructed on how to use the appliance safely and have understood the resulting dangers.

Children must not play with the appliance.

Children must not perform cleaning or user maintenance unless they are at least 15 years old and are being supervised.

Keep children under the age of 8 years away from the appliance and power cable.

Safe use

Follow these safety instructions when using the appliance.

WARNING – Risk of suffocation!

Children may put packaging material over their heads or wrap themselves up in it and suffocate.

- ▶ Keep packaging material away from children.
- ▶ Do not let children play with packaging material.

WARNING – Risk of fire!

- Fatty deposits in the grease filters may catch fire.
 - ▶ Never operate the appliance without a grease filter.
 - ▶ Clean the grease filters regularly.

- ▶ Never work with naked flames close to the appliance (e.g. flambéing).
- ▶ Do not install the appliance near a solid fuel heating appliance (e.g. wood- or coal-burning) unless the heating appliance has a sealed, non-removable cover. There must be no flying sparks.
- Hot oil or grease ignites very quickly.
 - ▶ Always supervise hot oil and fat.
 - ▶ Never extinguish burning oil or fat with water. Switch off the cooking zone. Extinguish flames carefully using a lid, fire blanket or something similar.
- When gas burners are in operation without any cookware placed on them, they can build up a lot of heat. A ventilation appliance installed above the cooker may become damaged or catch fire.
 - ▶ Only operate the gas burners with cookware on them.
- Operating multiple gas hobs at the same time generates a great deal of heat. A ventilation appliance installed above the cooker may become damaged or catch fire.
 - ▶ Only operate the gas hobs with cookware on them.
 - ▶ Select the highest fan setting.
 - ▶ Never operate two gas hobs simultaneously on the highest flame for longer than 15 minutes. Two gas hobs correspond to one large burner.
 - ▶ Never operate large burners of more than 5 kW with the highest flame for longer than 15 minutes, e.g. a wok.

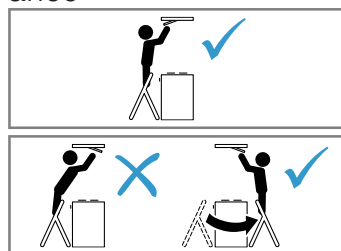
WARNING – Risk of burns!

- The accessible parts of the appliance become hot during operation.
 - ▶ Never touch these hot parts.
 - ▶ Keep children at a safe distance.
- The appliance will become hot during operation.
 - ▶ Allow the appliance to cool down before cleaning it.

WARNING – Risk of injury!

- Components inside the appliance may have sharp edges.
 - ▶ Carefully clean the appliance interior.

- Items placed on the appliance may fall off.
 - ▶ Do not place any objects on the appliance.
- Changes to the electrical or mechanical assembly are dangerous and may lead to malfunctions.
 - ▶ Do not make any changes to the electrical or mechanical assembly.
- The filter cover may swing out.
 - ▶ Open the filter cover slowly.
 - ▶ Take hold of the filter cover after opening until it no longer swings out.
 - ▶ Close the filter cover slowly.
- Risk of injury when opening and closing the hinges.
 - ▶ Keep your hands away from the hinges.
- The light emitted by LED lights is very dazzling, and can damage the eyes (risk group 1).
 - ▶ Do not look directly into the switched-on LED lights for longer than 100 seconds.
- Children may swallow batteries.
 - ▶ Keep batteries out of the reach of children.
 - ▶ Keep an eye on any children when you are replacing batteries.
- Batteries may explode.
 - ▶ Do not charge the batteries.
 - ▶ Do not short-circuit the batteries.
 - ▶ Do not throw batteries into a fire.
- Risk of falling when working on the appliance



- ▶ Use a stable stepladder.
- ▶ Do not lean over the hob.
- ▶ Do not step on the hob or the work surface.
- It may create an increased risk of injury if the appliance is operated by another person via the **Home Connect** app during cleaning.
 - ▶ Before cleaning, disconnect the appliance from the **Home Connect** app.

⚠ WARNING – Risk of electric shock!

- If the appliance or the power cord is damaged, this is dangerous.
 - ▶ Never operate a damaged appliance.
 - ▶ Never pull on the power cord to unplug the appliance. Always unplug the appliance at the mains.
 - ▶ If the appliance or the power cord is damaged, immediately unplug the power cord or switch off the fuse in the fuse box.
 - ▶ Call Customer Service. → *Page 13*
 - ▶ Repairs to the appliance should only be carried out by trained specialist staff.
- Improper repairs are dangerous.
 - ▶ Repairs to the appliance should only be carried out by trained specialist staff.
 - ▶ Only use genuine spare parts when repairing the appliance.
 - ▶ If the power cord of this appliance is damaged, it must be replaced by trained specialist staff.
- An ingress of moisture can cause an electric shock.
 - ▶ Before cleaning, pull out the mains plug or switch off the fuse in the fuse box.
 - ▶ Do not use steam- or high-pressure cleaners to clean the appliance.

⚠ WARNING – Risk of explosion!

Highly caustic alkaline or highly acidic cleaning agents in conjunction with aluminium parts in the interior of the appliance may cause explosions.

- ▶ Never use highly caustic alkaline or highly acidic cleaning agents. In particular, do not use commercial or industrial cleaning agents in conjunction with aluminium parts, e.g. grease filter on extractor hoods.

Preventing material damage

Follow these instructions to prevent material damage to your appliance, accessories or other objects in your kitchen.

General

Follow these instructions when using the appliance.

ATTENTION!

- Condensate may cause corrosion damage.
 - ▶ To prevent condensation from building up, switch on the appliance during cooking.
- If moisture gets into the controls, this may result in damage.
 - ▶ Never clean controls with a wet cloth.
- Incorrect cleaning damages the surfaces.
 - ▶ Follow the cleaning instructions.
 - ▶ Do not use harsh or abrasive detergents.
 - ▶ Clean stainless steel surfaces in the direction of the finish only.
 - ▶ Never clean controls with stainless steel cleaners.
- Condensation that flows back in may damage the appliance.
 - ▶ The air extraction duct must be installed with a gradient of at least 1° from the appliance.
- If you put incorrect stress on the design elements, they may break off.
 - ▶ Do not pull design elements.
 - ▶ Do not place objects on the design elements or hang objects from them.
- Leaking batteries may damage the remote control.
 - ▶ Remove the batteries if you are not using the remote control.
 - ▶ Safely dispose of the empty or defective batteries in an environmentally friendly manner.
- There is a risk of surface damage if you do not peel off the protective film.
 - ▶ Remove the protective film from all parts of the appliance before using for the first time.

Environmental protection and saving energy

Help protect the environment by using your appliance in a way that conserves resources and by disposing of reusable materials properly.

Disposing of packaging

The packaging materials are environmentally compatible and can be recycled.

- ▶ Sort the individual components by type and dispose of them separately.
Information about current disposal methods are available from your specialist dealer or local authority.

Saving energy

If you follow these instructions, your appliance will use less power.

Ensure that there is sufficient ventilation when cooking.

- + The appliance works more efficiently and with fewer operating noises.

Adjust the fan speed to the amount of steam produced during cooking.

- + The lower the fan speed, the less energy is consumed.

Only use intensive mode when required.

If cooking produces large amounts of steam, select a higher fan speed in good time.

- + The odours are distributed around the room less.

Switch the appliance off when you are not using it.

- + The appliance does not consume any energy.

Switch off the lighting if you no longer require it.

- + The lighting does not consume any energy.

Clean or replace the filters at regular intervals.

- + The effectiveness of the appliance is increased.

Put the cooking lid on.

- + The cooking vapours and condensation are reduced.

Operating modes

Air recirculation mode

The air which is drawn in is cleaned by the grease filters and an odour filter, and conveyed back into the room.



To bind odours in circulating-air mode, you must install an odour filter. The different options for operating the appliance in circulating-air mode can be found in our catalogue. Alternatively, ask your dealer. The required accessories are available from specialist retailers, from customer service or from the Online Shop.

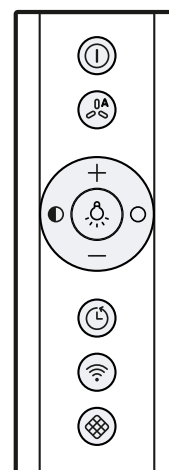
Familiarising yourself with your appliance

Familiarise yourself with the parts of your appliance.

Controls

Use the remote control to set all of the functions of your appliance.

Tip: Align the remote control as precisely as possible to the infrared receiver for the LED display.

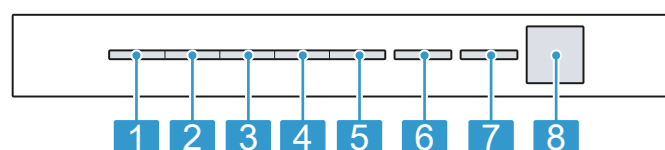


ⓘ	Switch the appliance on or off
0A	Switch on automatic mode ¹
+	Increase the fan setting
—	Decrease the fan setting
💡	Switch the lighting on or off
🔇	Reduce the brightness
🔊	Increase the brightness
⌚	Switch the fan run-on on or off
📶	Switch Home Connect on or off
🔍	Reset the filter saturation indicator

¹ Depending on the appliance specifications

LED display

Die LED-Anzeige zeigt eingestellte Werte und Funktionen.



1	Fan setting 1/grease filter saturation display
2	Fan setting 2/odour filter saturation indicator
3	Fan setting 3
4	Intensive mode 1
5	Intensive mode 2
6	Automatic mode ¹ /fan run-on time/interval ventilation
7	Home Connect
8	Infrared receiver

¹ Depending on the appliance specifications

Before using for the first time

Configure the settings for initial start-up. Clean the appliance and accessories.

Basic operation

You can find out everything you need to know about operating your appliance here.

Switching on the appliance

Requirement: Align the remote control as precisely as possible to the infrared receiver for the LED display.

- ▶ Press **ⓘ** to switch on the appliance.
- ✓ The appliance starts at fan setting 2.
- ✓ The LED for the set fan setting lights up in the LED display.

Switching off the appliance

Switch the appliance off when you are not using it.

- ▶ Press **ⓘ**.
- ✓ The fan run-on is switched on, LED 6 flashes in the LED display for the fan run-on.
- ✓ The fan automatically switches off after approx. 10 minutes.

Selecting a fan setting

- ▶ Press **+** or **-**.
- ✓ The LED for the set fan setting lights up in the LED display.

Switching on intensive mode

If particularly strong odours or vapours develop, you can use intensive mode.

1. **+** so oft drücken, bis in der LED-Anzeige die LED 4 für die Intensivstufe 1 leuchtet.
 2. **+** so oft drücken, bis in der LED-Anzeige die LED 5 für die Intensivstufe 2 leuchtet.
- ✓ After approx. 6 minutes, the appliance automatically switches to fan setting 3.

Switching off intensive mode

- ▶ To select a fan setting of your choice, press **-**.
- ✓ After approx. 6 minutes, the appliance automatically switches to fan setting 3.

Switching on the fan run-on

During the fan run-on, the appliance continues to run for a short time and then switches off automatically. The fan run-on removes remaining odours and is used to dry the odour filter after the cooking process.

- ▶ Press **ⓘ**.

- ✓ LED 1 for the fan setting lights up in the LED display. LED 6 flashes for the fan run-on.
- ✓ The appliance switches off automatically after approx. 10 minutes.

Switching off the fan run-on

- ▶ Press **ⓘ**.
- ✓ This immediately stops the fan run-on.
- ✓ The appliance switches to the fan setting that was previously selected.

Switch on automatic mode¹

The optimum fan setting is set automatically using a sensor.

- ▶ Press **ⓘ**.
- ✓ In the LED display, LED 6 lights up for automatic mode.

Switch off automatic mode¹

- ▶ Press **ⓘ**.
- ✓ The appliance switches to the fan setting that was previously set.
- ✓ The ventilation is automatically ended when the sensor detects no further change in the room air quality.
- ✓ Automatic mode runs for a maximum of four hours.

Intermittent ventilation

With interval ventilation, the ventilation system switches on and off in the selected setting for the selected time.

Note: This function is only available via a mobile device with the **Home Connect** app.

If the interval ventilation is switched on, LED 6 continuously flashes in the LED display for the interval ventilation and the LED for the selected fan setting lights up. As soon as the ventilation time ends, the LED for the fan setting you have selected goes out. LED 6 continues to flash.

Sensor control

In automatic mode, a sensor in the appliance detects the intensity of the cooking and roasting fumes. Depending on the setting of the sensor sensitivity, the optimum fan setting automatically switched on.

If the sensor control system reacts too weakly or too strongly, the setting for the sensor sensitivity may change.

- Default setting: Fan setting 3
- Lowest setting: Fan setting 1
- Highest setting: Fan setting 5

Setting the sensor control

Requirement: The appliance is switched off.

1. Press and hold **ⓘ** and **ⓘ** for approx. three seconds.
2. Press **+** or **-** to change the setting.
To cancel the setting, press **ⓘ**.

¹ Depending on the appliance specifications

3. To save the setting, press and hold ① and ⏻ for approx. three seconds.
Or wait approx. 10 seconds until the setting is saved automatically.
- ✓ A signal tone sounds as soon as the selected setting is saved.

Resetting the saturation indicator

After cleaning the grease filter or after changing the odour filter, the saturation indicator can be reset.

Requirements

- After the appliance has been switched off, LED 1 flashes in the LED display for the grease filter saturation display and/or LED 2 flashes for the saturation indicator for the odour filter.
- A repeated signal tone sounds.
- ▶ Press ⏻.
- ✓ The saturation indicator is reset.

Setting the saturation indicator

The saturation indicator must be adjusted depending on the filter used.

Requirement: The appliance is switched off.

1. Press and hold ① and ⏻ for approx. three seconds.
 - To set circulating-air mode (non-regenerable filter), press +/- until LED 2 lights up in the LED display.
 - To set circulating-air mode (non-regenerable filter), press +/- until LED 3 lights up in the LED display.
 - To convert the electronic control back to operation without the air recirculation filter, press +/- until LED 1 lights up on the LED display.
2. To save the setting, press and hold ① and ⏻ for approx. three seconds.
Or wait approx. 10 seconds until the setting is saved automatically.
To cancel the setting, press ①.
- ✓ A signal tone sounds as soon as the selected setting is saved.

Switching on the lighting

- ▶ Press ⏻ to switch on the lighting.

Note: Colour temperature settings are available in the **Home Connect** app provided the appliance has this function.

Switching off the lighting

- ▶ Switch off the lighting with ⏻.

Setting the brightness

- ▶ Press and hold ● or ○.

Note: Colour temperature settings are available in the **Home Connect** app provided the appliance has this function.

Switching on the button tone

The button tones can be switched on.

Requirement: The appliance is switched off.

1. Press and hold ① and — for approx. three seconds.
- ✓ In the LED display, the LED for the setting that is currently selected lights up.
2. Press + or — until LED 1 lights up in the LED display.
To cancel the setting, press ①.
3. To save the setting, press and hold ① and — for approx. three seconds.
Or wait approx. 10 seconds until the setting is saved automatically.
- ✓ A signal tone sounds as soon as the selected setting is saved.

Switching the button tone off

The button tones can be switched off.

Note: Signal tones for the appliance are always switched on and cannot be switched off.

Requirement: The appliance is switched off.

1. Press and hold ① and — for approx. three seconds.
- ✓ In the LED display, the LED for the setting that is currently selected lights up.
2. Press + or — until LED 2 lights up in the LED display.
To cancel the setting, press ①.
3. To save the setting, press and hold ① and — for approx. three seconds.
Or wait approx. 10 seconds until the setting is saved automatically.
- ✓ A signal tone sounds as soon as the selected setting is saved.

Hob-based hood control

You can connect your appliance to a suitable hob and, in this way, control the functions of your appliance via the hob.

You have the following options for connecting the appliances with each other:


- Connecting the appliance via the **Home Connect** app. If both appliances are **Home Connect**-compatible, they can be connected using the **Home Connect** app. Follow the instructions in the app.
- Connecting appliances directly with each other.
- Connecting appliances via the Wi-Fi home network.

Note: Please note the safety precautions in the instruction manual for your appliance and ensure that they are also observed when operating the appliance via the hob-based hood control.

Tip: Operating your appliance always takes priority. It is not possible to use the hood controls on the hob during this time.

Connecting directly

Requirements

- Your appliance is now switched off.
 - Before connecting the appliances, reset all connections to your home network or other appliances. If your appliance is connected directly to the hob, it cannot be connected to your home network as well and you will not be able to use Home Connect.
1. **Note:** Refer to the section entitled "Hob-based hood control" in the instruction manual for your hob. Switch on the hob and select the search mode.
 2. Press and hold the  button until the LED for **Home Connect** flashes in the LED display.
- ✓ The appliance is connected to the hob if the LED for **Home Connect** no longer flashes and lights up permanently.

Connecting via your home network

1. Follow the instructions in
 - "Automatically connecting the appliance to the WLAN home network (Wi-Fi)", Page 8 or
 - "Manually connecting the appliance to the WLAN home network (Wi-Fi)", Page 8.
2. As soon as the appliance is connected to the home network, establish the connection to the hob via the **Home Connect** app.
3. Follow the instructions on your mobile device.

Home Connect

This appliance is network-capable. Connecting your appliance to a mobile device lets you control its functions via the **Home Connect** app, adjust its basic settings and monitor its operating status.

The **Home Connect** services are not available in every country. The availability of the **Home Connect** function depends on the availability of **Home Connect** services in your country. You can find information about this at: www.home-connect.com.

To be able to use **Home Connect**, you must first set up the connection to the WLAN home network (Wi-Fi¹) and to the **Home Connect** app.

- Automatically connecting appliance to WLAN home network (Wi-Fi) → Page 8
- Connecting appliance to WLAN home network (Wi-Fi) manually → Page 8

The **Home Connect** app guides you through the entire login process. Follow the instructions in the **Home Connect** app to configure the settings.

If the appliance is not connected to your home network, it functions as an appliance with no network connection and can still be operated via the display.

Tips


- Please consult the documents supplied by **Home Connect**.
- Please also follow the instructions in the **Home Connect** app.

Notes


- Please note the safety precautions in this instruction manual and make sure that they are also observed when operating the appliance via the **Home Connect** app.
→ "Safety", Page 2
- Operating the appliance on the appliance itself always takes priority. During this time it is not possible to operate the appliance using the **Home Connect** app.
- In networked standby mode, the appliance requires a maximum of 2 W.
- If you need your device's MAC address to connect to your home network, you can find this next to the rating plate → Page 14 inside the appliance. To do this, Remove the filter → Page 10.

Automatically connecting the appliance to the WLAN home network (Wi-Fi)


If your router has a WPS function, you can connect the appliance to your WLAN home network (Wi-Fi) automatically.

Note: The appliance cannot be switched on during the connection process. Press  to cancel the process.

Requirements


- Wi-Fi on the router is activated.
 - The appliance receives signals from the WLAN home network (Wi-Fi) at its installation location.
 - The **Home Connect** app is installed on your mobile device.
 - The appliance and the light are switched off.
1. Press and hold the  button until LED 7 flashes in the LED display.
 2. Press **+**.
✓ LED 1 and LED 7 flash in the LED display.
 3. Press the WPS button on the router within the next 2 minutes.
✓ If the connection has been established, the appliance automatically connects to the **Home Connect** app. LED 3 and LED 7 flash in the LED display.
 4. If no connection can be established, the appliance automatically switches to the manual connection to the home network, LED 2 and LED 7 flash in the LED display. Log the appliance manually into the home network or press **—** in order to restart the login.
 5. On your mobile device, follow the instructions for automatic network login.
✓ The login process is complete when LED 7 stops flashing and remains continuously lit.

Manually connecting the appliance to the WLAN home network (Wi-Fi)

Note: The appliance cannot be switched on during the connection process. Press  to cancel the process.


Requirement: The appliance and the light are switched off.

¹ Wi-Fi is a registered trademark of the Wi-Fi Alliance.

1. Press and hold the  button until LED 7 flashes in the LED display.
2. Press **+** twice to start logging into your home network manually.
 - ✓ LED 2 and LED 7 flash in the LED display.
3. Follow the instructions in the app.
 - ✓ If the connection has been established, the appliance automatically connects to the **Home Connect** app. LED 3 and LED 7 light up in the LED display.
4. On your mobile device, follow the instructions for manually logging into your network.
 - ✓ The login process is complete when LED 7 stops flashing and remains continuously lit.

Connecting the appliance to the Home Connect app

Requirements

- The **Home Connect** app is installed on your mobile device.
 - The **Home Connect** app is opened.
1. Press and hold the  button until LED 3 and LED 7 flash in the LED display.
 2. Follow the instructions for the **Home Connect** app on the mobile device.
 - ✓ The login process is complete when LED 7 stops flashing and remains continuously lit.

Home Connect settings

Adapt **Home Connect** to your needs.

You can find the **Home Connect** settings in the basic settings for your appliance. Which settings the display shows will depend on whether **Home Connect** has been set up and whether the appliance is connected to your home network.

Software update

Your appliance's software can be updated using the software update function, e.g. for the purposes of optimisation, troubleshooting or security updates. To do this, you must be a registered **Home Connect** user, have installed the app on your mobile device and be connected to the **Home Connect** server.

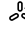
As soon as a software update is available, you will be informed via the **Home Connect** app and will be able to start the software update via the app. Once the update has been successfully downloaded, you can start installing it via the **Home Connect** app if you are in your local area network. The **Home Connect** app will inform you once installation is successful.

Notes

- You can continue to use your appliance as normal while updates are downloading. Depending on your personal settings in the app, software updates can also be set to download automatically.
- We recommend that you install security updates as soon as possible.

Resetting the connection

Saved connections to the home network and to **Home Connect** can be reset.

- ▶ Press and hold  and **+** until LED 7 goes out in the LED display.
- ✓ An audible signal sounds.

Remote diagnostics

Customer Service can use Remote Diagnostics to access your appliance if you contact them, have your appliance connected to the **Home Connect** server and if Remote Diagnostics is available in the country in which you are using the appliance.

Tip: For further information and details about the availability of Remote Diagnostics in your country, please visit the service/support section of your local website: www.home-connect.com

Data protection

Please see the information on data protection.

The first time your appliance is registered on a home network connected to the Internet, your appliance will transmit the following types of data to the **Home Connect** server (initial registration):

- Unique appliance identification (consisting of appliance codes as well as the MAC address of the Wi-Fi communication module installed).
- Security certificate of the Wi-Fi communication module (to ensure a secure data connection).
- The current software and hardware version of your appliance.
- Status of any previous reset to factory settings.

This initial registration prepares the **Home Connect** functions for use and is only required when you want to use the **Home Connect** functions for the first time.

Note: Please note that the **Home Connect** functions can only be utilised with the **Home Connect** app. Information on data protection can be retrieved in the **Home Connect** app.

Declaration of Conformity

Constructa Neff Vertriebs-GmbH hereby declares that the appliance with Home Connect functionality meets the essential requirements and other relevant provisions of the Directive **2014/53/EU**.

A detailed **RED** Declaration of Conformity can be found online at www.neff-international.com among the additional documents on the product page for your appliance.



2.4 GHz band: 100 mW max.
5 GHz band: 100 mW max.



BE	BG	CZ	DK	DE	EE	IE	EL
ES	FR	HR	IT	CY	LV	LT	LU
HU	MT	NL	AT	PL	PT	RO	SI

Cleaning and servicing

To keep your appliance working efficiently for a long time, it is important to clean and maintain it carefully.

Cleaning products

You can obtain suitable cleaning products from after-sales service or the online shop.

⚠ WARNING – Risk of electric shock!

An ingress of moisture can cause an electric shock.

- ▶ Before cleaning, pull out the mains plug or switch off the fuse in the fuse box.
- ▶ Do not use steam- or high-pressure cleaners to clean the appliance.

⚠ WARNING – Risk of burns!

The appliance will become hot during operation.

- ▶ Allow the appliance to cool down before cleaning it.

ATTENTION!

Unsuitable cleaning products may damage the surfaces of the appliance.

- ▶ Do not use harsh or abrasive detergents.
- ▶ Do not use cleaning products with a high alcohol content.
- ▶ Do not use hard scouring pads or cleaning sponges.
- ▶ Do not use any special cleaners for cleaning the appliance while it is hot.
- ▶ Only use glass cleaners, glass scrapers or stainless steel care products if recommended in the cleaning instructions for the relevant part.
- ▶ Wash sponge cloths thoroughly before use.

Cleaning the stainless steel surfaces

1. Observe the information regarding the cleaning agents.
→ "Cleaning products", Page 10
2. Clean using a sponge cloth and hot soapy water in the direction of the finish.
3. Dry with a soft cloth.
4. Apply a thin layer of the stainless steel cleaning product with a soft cloth.

Tip: You can obtain stainless steel cleaning products from after-sales service or the online shop.

Cleaning painted surfaces

1. Observe the information regarding the cleaning agents.
→ "Cleaning products", Page 10
2. Clean using a sponge cloth and hot soapy water in the direction of the finish.
3. Dry with a soft cloth.

Cleaning aluminium

1. Observe the information regarding the cleaning agents.
→ "Cleaning products", Page 10
2. Clean with a soft cloth and glass cleaner.

Cleaning plastic

1. Observe the information regarding the cleaning agents.
→ "Cleaning products", Page 10
2. Clean with a soft cloth and glass cleaner.

Cleaning glass

1. Observe the information regarding the cleaning agents.
→ "Cleaning products", Page 10
2. Clean with a soft cloth and glass cleaner.

Cleaning controls

⚠ WARNING – Risk of electric shock!

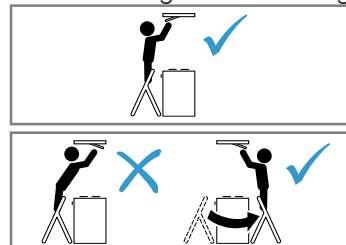
Penetrating moisture may cause an electric shock.

- ▶ Do not use wet sponge cloths.
1. Observe the information regarding the cleaning agents.
→ "Cleaning products", Page 10
 2. Clean using a damp sponge cloth and hot soapy water.
 3. Dry with a soft cloth.

Removing the grease filter

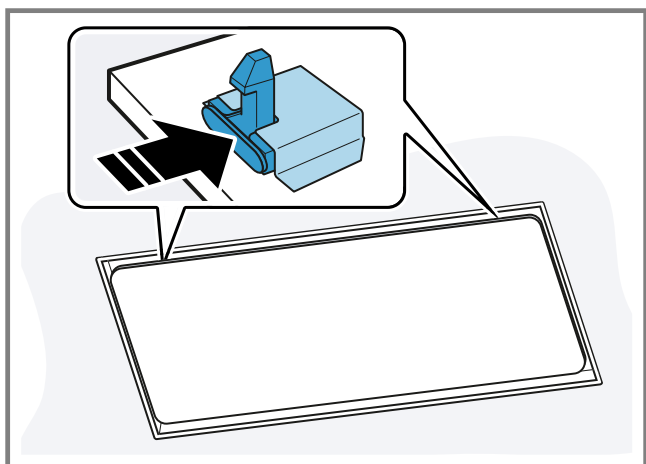
⚠ WARNING – Risk of injury!

- The filter cover may swing out.
 - ▶ Open the filter cover slowly.
 - ▶ Take hold of the filter cover after opening until it no longer swings out.
 - ▶ Close the filter cover slowly.
- Risk of falling when working on the appliance



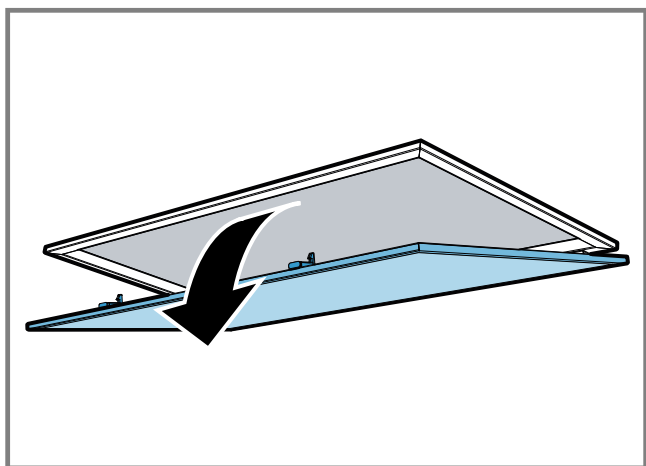
- ▶ Use a stable stepladder.
- ▶ Do not lean over the hob.
- ▶ Do not step on the hob or the work surface.

1. Press the lock on the filter cover.



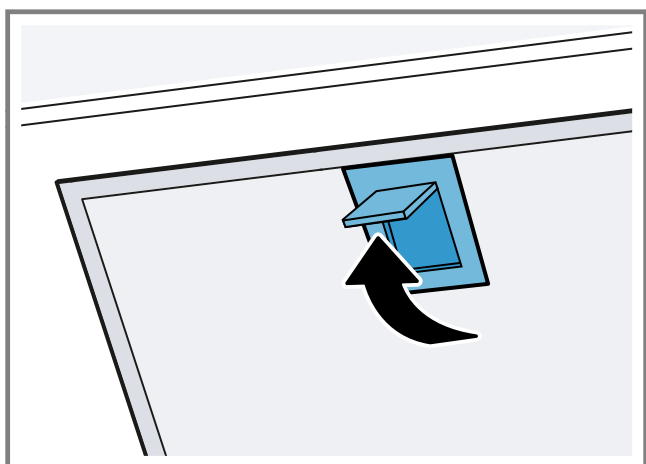
To prevent the filter cover from swinging down suddenly, hold onto the filter cover firmly with two hands.

2. Open the filter cover by pulling it downwards.



3. **ATTENTION!** Falling grease filters may damage the hob below.

► Grip below the grease filter with one hand. Open the locks on the grease filters.



4. Remove the grease filters from the holders. To prevent grease from dripping, hold the grease filter horizontally.

Cleaning grease filters in the dishwasher

The grease filters filter the grease from the cooking vapour. Regularly cleaned grease filters guarantee a high level of grease removal.

⚠ WARNING – Risk of fire!

Fatty deposits in the grease filters may catch fire.

► Clean the grease filters regularly.

ATTENTION!

The grease filters may become damaged if they are squeezed.

► Do not squeeze the grease filters.

Note: When cleaning the grease filter in the dishwasher, light discolouration may occur. This discolouration has no effect on the performance of the metal grease filters.

Requirement: The grease filters have been removed.

1. Observe the information regarding the cleaning agents.
→ "Cleaning products", Page 10
2. Place the grease filters loosely into the dishwasher. Do not clean heavily soiled grease filters with utensils.
Use special grease solvent for stubborn dirt. You can obtain grease solvents from after-sales service or the online shop.
3. Start the dishwasher.
Select a temperature of no more than 70 °C.
4. Allow the grease filters to drain.

Cleaning grease filters manually

The grease filters filter the grease from the cooking vapour. Regularly cleaned grease filters guarantee a high level of grease removal.

⚠ WARNING – Risk of fire!

Fatty deposits in the grease filters may catch fire.

► Clean the grease filters regularly.

Requirement: The grease filters have been removed.

1. Observe the information regarding the cleaning agents.
→ "Cleaning products", Page 10
2. Soak the grease filter in hot soapy water.
Use special grease solvent for stubborn dirt. You can obtain grease solvents from after-sales service or the online shop.
3. Use a brush to clean the grease filters.
4. Rinse the grease filters thoroughly.
5. Allow the grease filters to drain.

Fitting grease filters

ATTENTION!

Falling grease filters may damage the hob below.

► Grip below the grease filter with one hand.

1. Fit the grease filters.

2. Fold the grease filters upwards and engage the locks.
3. Make sure that the locks engage.
4. Close the filter cover.
5. Make sure that the filter cover locks engage correctly.

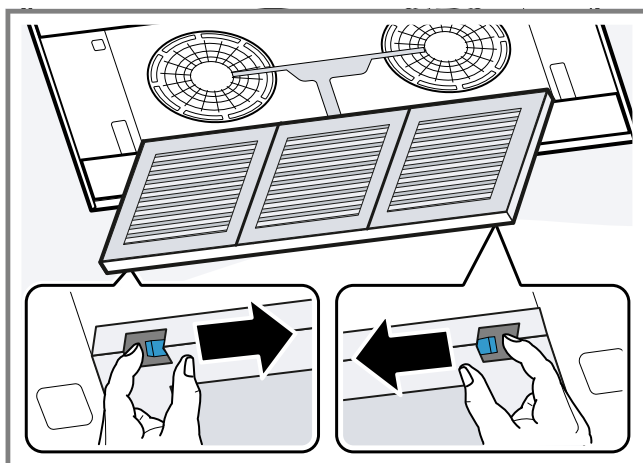
Odour filter for recirculating air mode

You can obtain odour filters from the after-sales service or the online shop. Only use original odour filters.

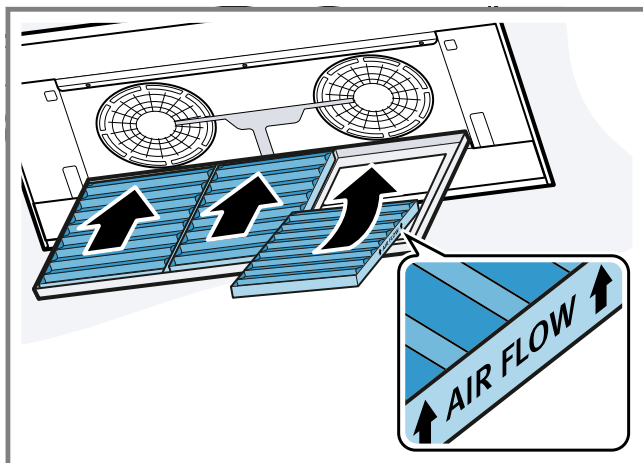
Replacing the odour filter

Requirement: The grease filters have been removed.

1. Open the odour filter cartridge.



2. Remove the odour filter.
3. Remove the new odour filter from the packaging.
4. Insert the odour filter.



Insert the odour filter in the correct direction.

5. Close the odour filter cartridge.
6. → "Fitting grease filters", Page 11.

Replacing the batteries in the remote control

⚠ WARNING – Risk of injury!

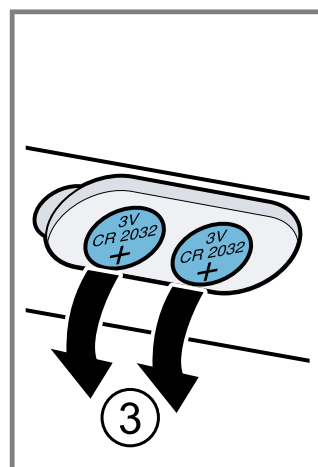
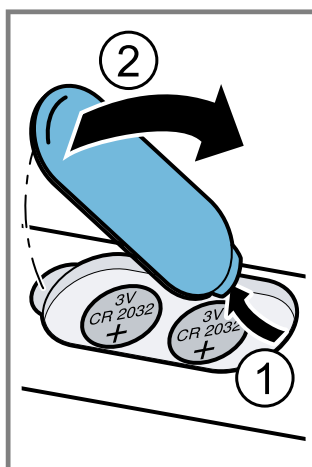
- Children may swallow batteries.
 - ▶ Keep batteries out of the reach of children.
 - ▶ Keep an eye on any children when you are replacing batteries.

- Batteries may explode.
 - ▶ Do not charge the batteries.
 - ▶ Do not short-circuit the batteries.
 - ▶ Do not throw batteries into a fire.

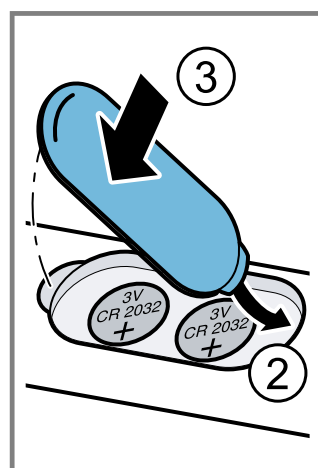
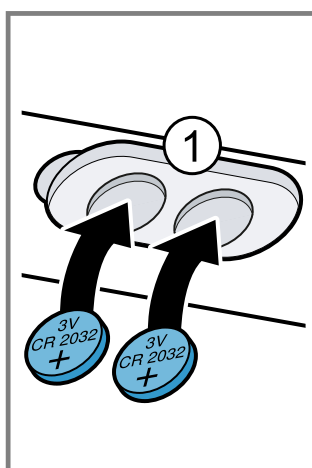
ATTENTION!

- Improper handling of batteries.
 - ▶ Do not short-circuit the terminals.
 - ▶ Use the specified type of batteries only.
 - ▶ Do not use different battery types together.
 - ▶ Do not use new and used batteries together.
 - ▶ Do not use rechargeable batteries.
- Leaking batteries may damage the remote control.
 - ▶ Remove the batteries if you are not using the remote control.
 - ▶ Safely dispose of the empty or defective batteries in an environmentally friendly manner.

1. Remove the cover.
2. Remove the empty batteries.



3. Insert the new batteries (3 V CR 2032).



4. Close the cover.
5. Dispose of the empty batteries in an environmentally friendly manner.

Troubleshooting

You can rectify minor faults on your appliance yourself. Read the troubleshooting information before contacting after-sales service. This will avoid unnecessary costs.

⚠ WARNING – Risk of injury!

Improper repairs are dangerous.



- ▶ Repairs to the appliance should only be carried out by trained specialist staff.
- ▶ If the appliance is defective, call Customer Service.

⚠ WARNING – Risk of electric shock!

Improper repairs are dangerous.

- ▶ Repairs to the appliance should only be carried out by trained specialist staff.
- ▶ Only use genuine spare parts when repairing the appliance.
- ▶ If the power cord of this appliance is damaged, it must be replaced by trained specialist staff.

Malfunctions

Fault	Cause	troubleshooting
The appliance is not working.	The mains plug of the power cord is not plugged in.	▶ Connect the appliance to the power supply.
	The circuit breaker is faulty.	▶ Check the circuit breaker in the fuse box.
	There has been a power cut.	▶ Check whether the lighting in your kitchen or other appliances are working.
The lighting does not work.	Different causes are possible.	▶ Call the after-sales service. → "Customer Service", Page 13
		▶ Defective LED lights may be replaced by the manufacturer, their customer service or a qualified technician (electrician) only.
Remote control not working.	The batteries are flat.	▶ → "Replacing the batteries in the remote control", Page 12
In the LED display, the LEDs flash one to five times after the appliance is switched off.	The batteries are almost empty.	▶ → "Replacing the batteries in the remote control", Page 12
The lighting automatically switches on as soon as the appliance is connected to the power supply.	Demo mode is switched on.	▶ Press and hold  and  for approx. three seconds.
LED 1 flashes in the LED display.	The grease filters are saturated.	▶ → "Cleaning grease filters in the dishwasher", Page 11
		▶ → "Cleaning grease filters manually", Page 11
LED 2 flashes in the LED display.	The odour filters are saturated.	▶ Change the odour filter. → Page 12

Customer Service

If you have any queries on use, are unable to rectify faults on the appliance yourself or if your appliance needs to be repaired, contact Customer Service. You can solve many problems yourself by consulting the information on troubleshooting in these instructions or on our website. If this is not the case, contact our after-sales service.

We will always find an appropriate solution and try to avoid unnecessary visits being made by a Customer Service technician.

With any warranty claims, we will make sure that your appliance is repaired by trained after-sales technicians using genuine spare parts, including after the manufacturer's warranty has expired.

Function-relevant genuine spare parts according to the corresponding Ecodesign Order can be obtained from Customer Service for a period of at least 10 years from the date on which your appliance was placed on the market within the European Economic Area.

Note: Under the terms of the manufacturer's warranty the use of Customer Service is free of charge.

Detailed information on the warranty period and terms of warranty in your country is available from our after-sales service, your retailer or on our website.

If you contact Customer Service, you will require the product number (E-Nr.) and the production number (FD) of your appliance.

The contact details for Customer Service can be found in the enclosed Customer Service directory or on our website.

Product number (E-Nr.) and production number (FD)

You can find the product number (E-Nr.) and the production number (FD) on the appliance's rating plate. Depending on the model, the rating plate can be found:

- Inside the appliance (remove grease filters for access).
- On top of the appliance.

Make a note of your appliance's details and the Customer Service telephone number to find them again quickly.

Accessories

Only use original accessories. These have been made especially for your appliance. Here you can find an overview of your appliance's accessories and how to use them.

accessories	Order number
Odour filter – can be re-generated	Z52JXP0X0
Odour filter – cannot be regenerated	Z52JXB1X6

Disposal

Find out here how to dispose of old appliances correctly.

Disposing of old appliance

Valuable raw materials can be reused by recycling.

1. Unplug the appliance from the mains.
2. Cut through the power cord.
3. Dispose of the appliance in an environmentally friendly manner.



This appliance is labelled in accordance with European Directive 2012/19/EU concerning used electrical and electronic appliances (waste electrical and electronic equipment - WEEE). The guideline determines the framework for the return and recycling of used appliances as applicable throughout the EU.

Disposing of batteries

Batteries should be recycled in an environmentally friendly manner. Do not dispose of the batteries in the household rubbish.

- Dispose of batteries in an environmentally friendly manner.
Only for EU countries:

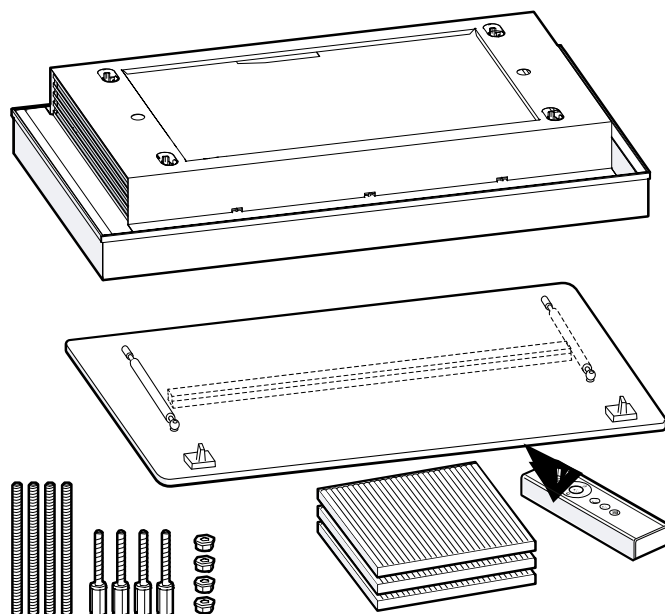


According to the European Guideline 2006/66/EC, defective or used battery packs/batteries, must be collected separately and disposed of in an environmentally correct manner.

Installation instructions

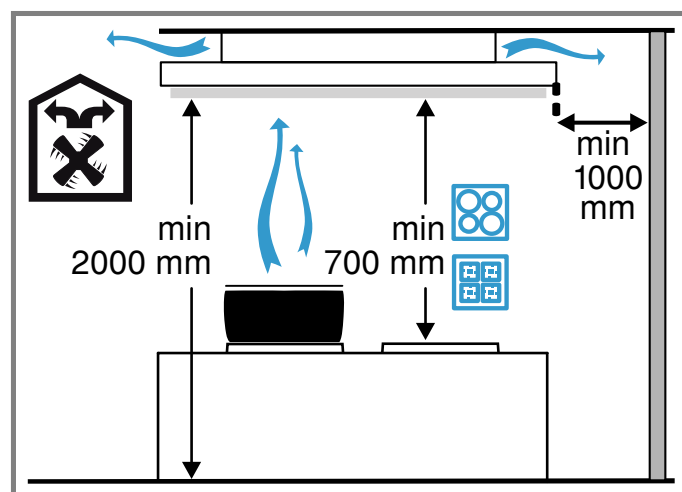
Included with the appliance

After unpacking all parts, check for any damage in transit and completeness of the delivery.



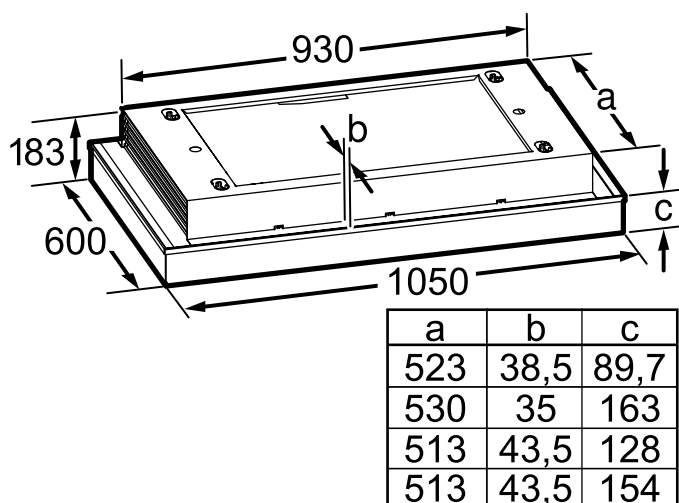
Safety clearances

Comply with the safety clearances for the appliance.



Dimensions

You will find the dimensions of the appliance here



Secure installation

Follow these safety instructions when installing the appliance.

⚠ WARNING – Risk of suffocation!

Children may put packaging material over their heads or wrap themselves up in it and suffocate.

- ▶ Keep packaging material away from children.
- ▶ Do not let children play with packaging material.

⚠ WARNING – Risk of fire!

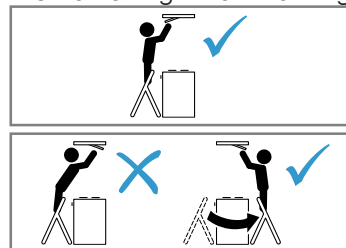
- Grease deposits in the grease filter may catch fire.
 - ▶ The specified safety clearances must be complied with in order to prevent a build-up of heat.
 - ▶ Observe the specifications for your cooking appliance. If gas and electric hobs are being operated together, the largest specified clearance applies.
- Grease deposits in the grease filter may catch fire.
 - ▶ Never work with naked flames close to the appliance (e.g. flambéing).
 - ▶ Do not install the appliance near a heat-producing appliance for solid fuel (e.g. wood or coal) unless a closed, non-removable cover is available. There must be no flying sparks.

⚠ WARNING – Risk of injury!

- Components inside the appliance may have sharp edges.
 - ▶ Wear protective gloves.
- The appliance may fall down if it has not been properly fastened in place.
 - ▶ All fastening components must be fixed firmly and securely in place.
- The appliance is heavy.
 - ▶ To move the appliance, two people are required.
 - ▶ Use only suitable tools and equipment.
- The appliance is heavy.
 - ▶ The appliance must not be fitted directly onto plasterboard or similar lightweight materials.

- ▶ To ensure correct installation, you must use a material which is sufficiently stable and suitable for both the structural conditions and the weight of the appliance.

- Changes to the electrical or mechanical assembly are dangerous and may lead to malfunctions.
 - ▶ Do not make any changes to the electrical or mechanical assembly.
- Risk of falling when working on the appliance



- ▶ Use a stable stepladder.
- ▶ Do not lean over the hob.
- ▶ Do not step on the hob or the work surface.
- The filter cover may swing out.
 - ▶ Open the filter cover slowly.
 - ▶ Take hold of the filter cover after opening until it no longer swings out.
 - ▶ Close the filter cover slowly.
- Risk of injury when opening and closing the hinges.
 - ▶ Keep your hands away from the hinges.

⚠ WARNING – Risk of electric shock!

- Sharp-edged components inside the appliance may damage the connecting cable.
 - ▶ Do not kink or trap the connecting cable.
- If the appliance or the power cord is damaged, this is dangerous.
 - ▶ Never operate a damaged appliance.
 - ▶ Never pull on the power cord to unplug the appliance. Always unplug the appliance at the mains.
 - ▶ If the appliance or the power cord is damaged, immediately unplug the power cord or switch off the fuse in the fuse box.
 - ▶ Call Customer Service. → Page 13
 - ▶ Repairs to the appliance should only be carried out by trained specialist staff.
- Improper repairs are dangerous.
 - ▶ Repairs to the appliance should only be carried out by trained specialist staff.
 - ▶ Only use genuine spare parts when repairing the appliance.
 - ▶ If the power cord of this appliance is damaged, it must be replaced by trained specialist staff.
- Improper installation is dangerous.
 - ▶ Connect and operate the appliance only in accordance with the specifications on the rating plate.
 - ▶ Connect the appliance to a power supply with alternating current only via a properly installed socket with earthing.
 - ▶ The protective conductor system of the domestic electrical installation must be properly installed.
 - ▶ Never equip the appliance with an external switching device, e.g. a timer or remote control.
 - ▶ When the appliance is installed, the mains plug of the power cord must be freely accessible. If free access is not possible, an all-pole isolating switch must be installed in the permanent elec-

trical installation according to the conditions of Overvoltage Category III and according to the installation regulations.

- ▶ When installing the appliance, check that the power cable is not trapped or damaged.

Information on the installation situation

- Install this appliance on the kitchen ceiling or a stable suspended ceiling.

Instructions for the electrical connection

In order to be able to safely connect the appliance to the electrical system, follow these instructions.

⚠ WARNING – Risk of electric shock!

- It must always be possible to disconnect the appliance from the electricity supply. The appliance must only be connected to a protective contact socket that has been correctly installed.
 - ▶ The mains plug for the mains power cable must be easily accessible after the appliance is installed.
 - ▶ If this is not possible, an all-pole isolating switch must be integrated into the permanent electrical installation according to the conditions of overvoltage category III and according to the installation regulations.
 - ▶ The permanent electrical installation must only be wired by a professional electrician. We recommend installing a residual-current circuit breaker (RCCB) in the appliance's power supply circuit.
- Sharp-edged components inside the appliance may damage the connecting cable.
 - ▶ Do not kink or trap the connecting cable.
- The connection data can be found on the rating plate inside the appliance.
- To see the rating plate, remove the grease filter.
- The connecting cable is approx. 1.30 m long.
- This appliance complies with the EC interference suppression regulations.
- The appliance corresponds to protection class 1. Therefore, only use the appliance with a protective earth connection.
- Do not connect the appliance to the power supply during installation.
- Ensure that the protection against contact is guaranteed during installation.
- Only a licensed professional may connect appliances without plugs. They are subject to the requirements of the local electricity provider.

General information

- The appliance finds it more difficult to draw in the cooking vapours the further away they are from the hob. Therefore maintain a distance of at least 700 mm and no more than 1500 mm.
- To optimally detect the cooking vapours, install the appliance in the middle of the hob.
- In order to freely access the appliance for servicing, select an easy-to-reach installation site.

- The surfaces of the appliance are sensitive. Avoid damaging them during installation.

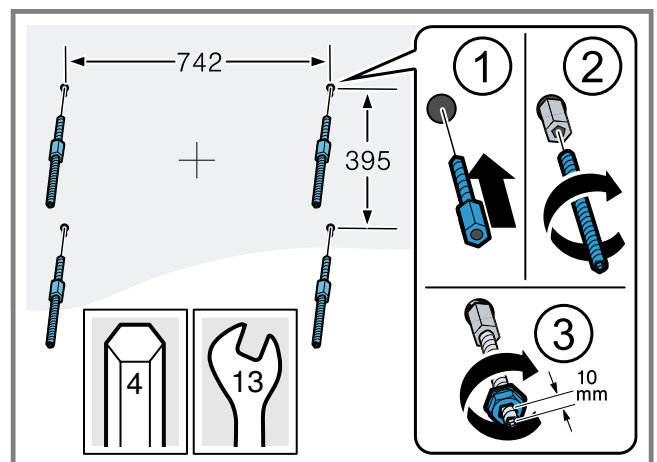
Installation

Checking the ceiling

1. Check whether the ceiling is horizontal and adequately load-bearing.
The max. weight of the appliance is **40 kg**. Do not fit the appliance directly onto plasterboard (or similar lightweight materials) in a suspended ceiling.
2. Drill the hole depth in accordance with the length of the screws.
3. Install the appliance with a fixing material which is sufficiently stable and has been adjusted accordingly for both the structural conditions and the weight of the appliance.
4. Check the cut-out area for existing cables of other appliances.

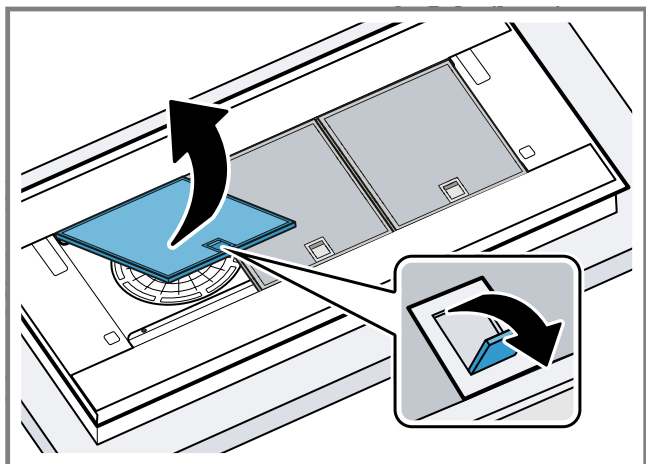
Preparing the ceiling

1. Cover the hob to prevent damage.
2. Determine the position of the appliance and, thereby, the centre based on the position of the hob.
3. Using the drilling template, measure and mark the positions of the fastening screws.
The bottom edge of the appliance is identical to the lower edge of the drilling template.
4. Ensure that there are no electrical wires, gas pipes or water pipes in the area where holes are to be drilled.
5. Drill four holes with a diameter of 6 mm for the fixing.
6. Drill the hole depth in accordance with the length of the screws.
7. Screw the fastening screws into the ceiling.
8. Screw in the threaded rods.
9. Screw the nuts approx. 10 mm onto the threaded rods.



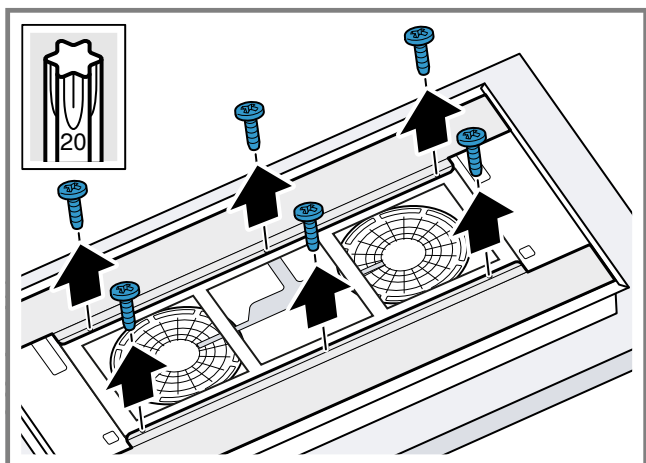
Preparing the appliance

1. Remove the grease filters.

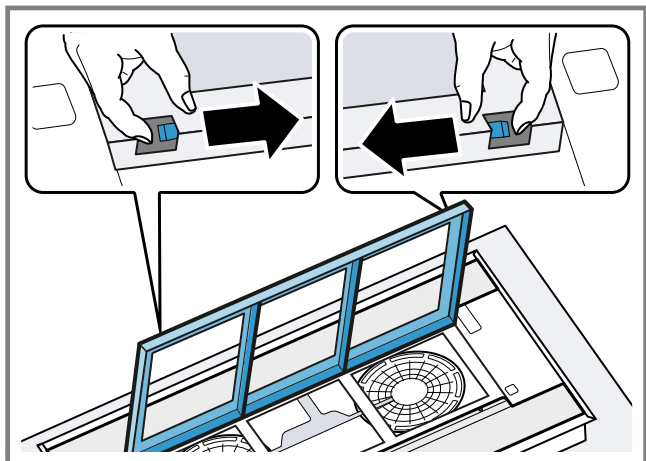


To avoid causing damage, do not bend the grease filters.

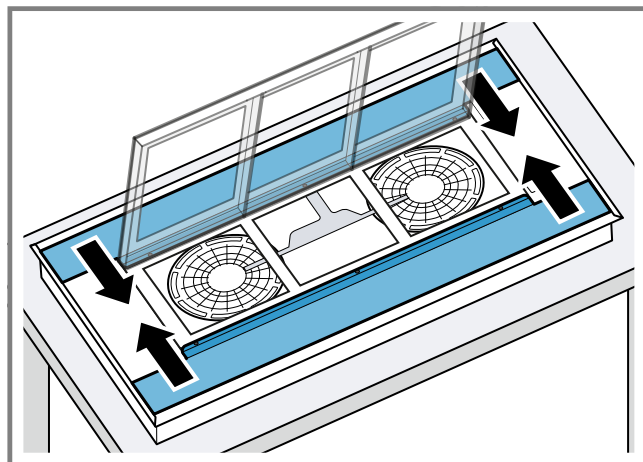
2. Loosen the screws on the side covers.



3. Open the odour filter cartridge.



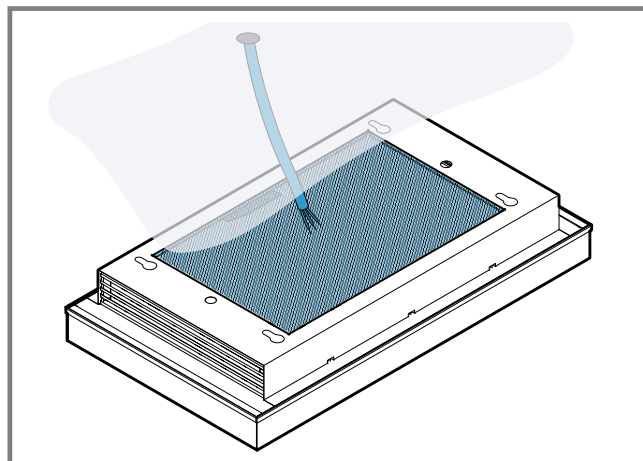
4. Push the side covers inwards and remove them.



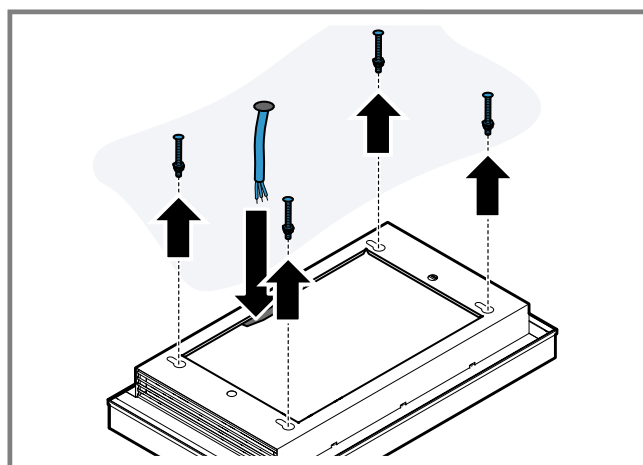
5. Close the odour filter cartridge.

Hanging the appliance

1. Lift the appliance by the corners and turn it over.
2. Position the cable that is provided on-site in the marked area on the appliance.

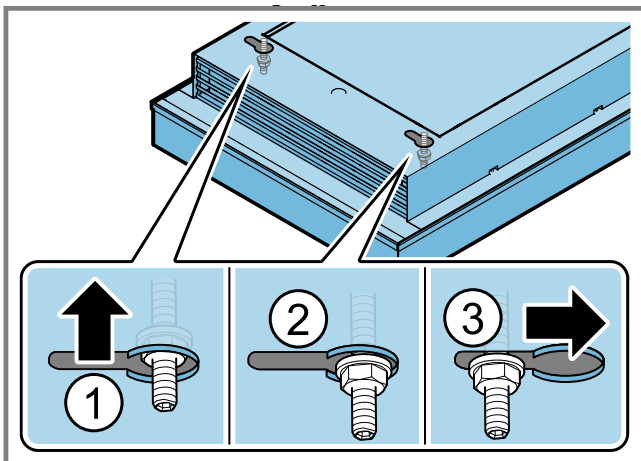


3. Guide the cable that is provided on-site through the opening and hook the appliance into the fastening screws on the ceiling.

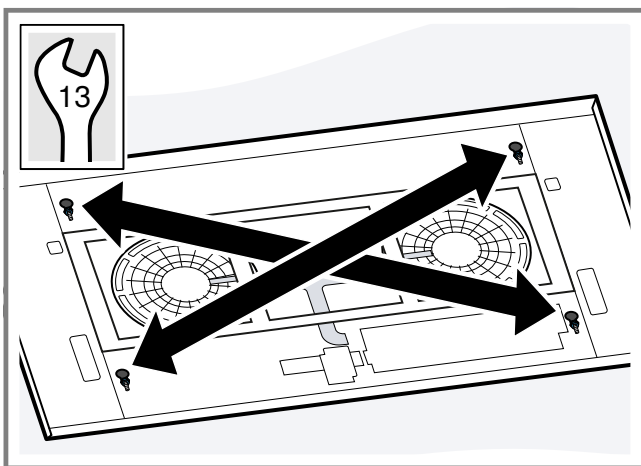


4. Push the appliance as far as it will go into the four key hole openings using the guide sleeves.

5. Move the appliance and lower it further so that the collar nuts are positioned on the edge of the guide sleeves.



6. Carefully tighten the diagonally opposite collar nuts until the appliance is flush-mounted on the ceiling.



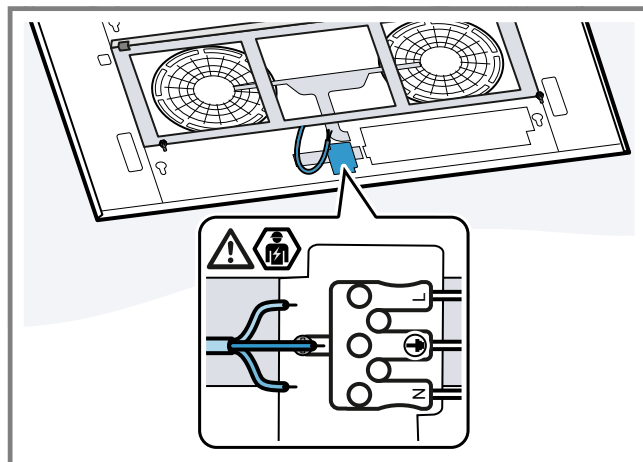
Tighten the collar nuts one at a time so that the appliance does not tilt when doing so.

Connecting the appliance

Requirement: Ensure that the protection against contact is guaranteed during installation.

1. Guide the cable that is provided on-site through the opening in the appliance. Maintain the bending radius of the cable that is provided on-site for connecting the appliance. The cable must remain doubly insulated. You should therefore strip the cable as little as possible upstream of the connecting terminal.

2. Insert the on-site cable into the terminal plug.

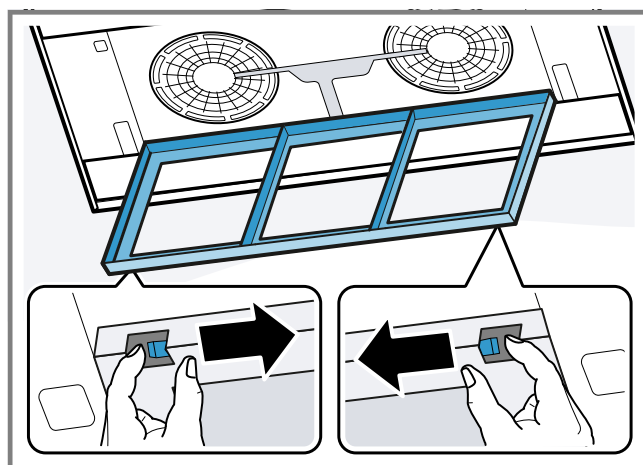


Installing covers

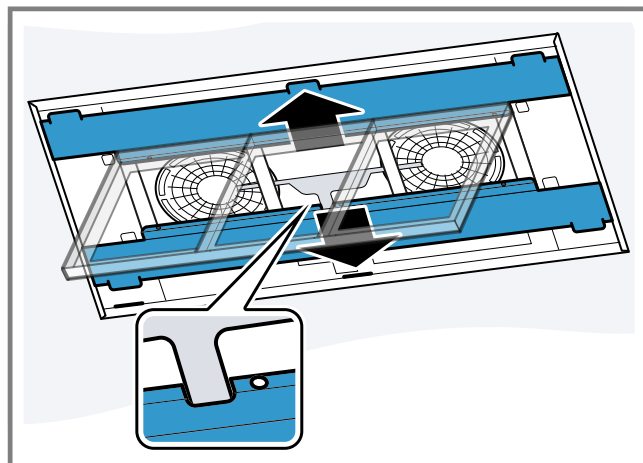
⚠ WARNING – Risk of injury!

- Components inside the appliance may have sharp edges.
 - ▶ Wear protective gloves.
- Risk of injury when opening and closing the hinges.
 - ▶ Keep your hands away from the hinges.

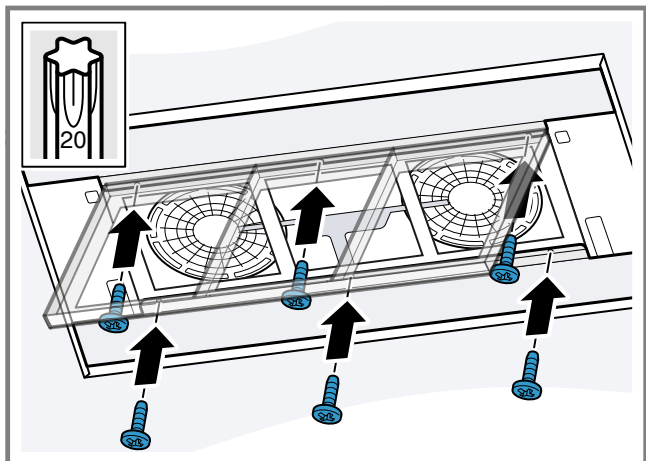
1. Open the odour filter cartridge.



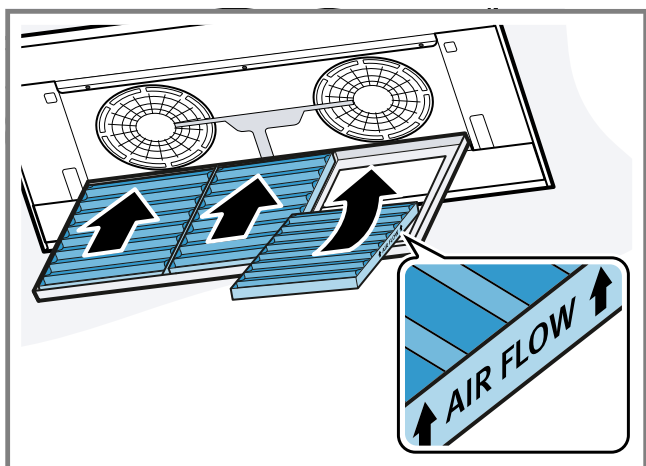
2. Insert the side covers.



- 3.** Push the side covers in the direction of the appliance frame and screw them firmly in place.



4. Remove the new odour filter from the packaging.
5. Insert the odour filter into the odour filter cartridge.



Insert the odour filter in the correct direction.

6. Close the odour filter cartridge.
7. Fit the grease filters.
To avoid causing damage, do not bend the grease filters.

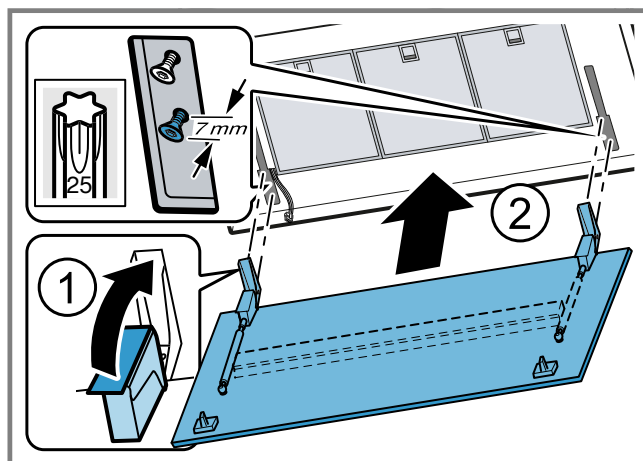
Fitting the filter cover



⚠ WARNING – Risk of injury!

- Components inside the appliance may have sharp edges.
 - ▶ Wear protective gloves.
- Risk of injury when opening and closing the hinges.
 - ▶ Keep your hands away from the hinges.

1. Open the hinges on the filter cover.

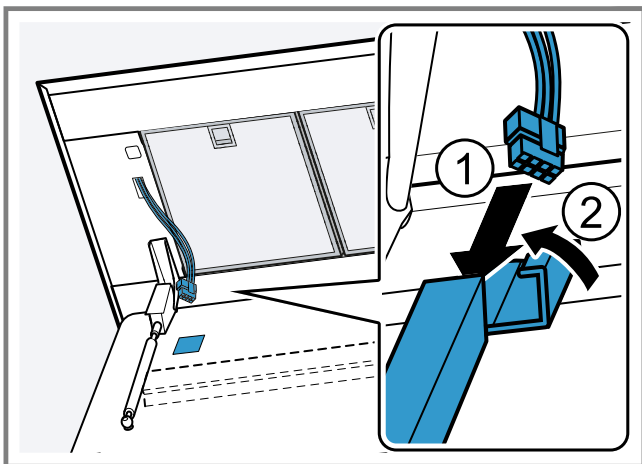


2. Mount the filter cover on the designated screws and push it backwards/forwards depending on the key hole opening into the narrow section.



- 3.** Tighten the fastening screws on the hinges.

4. Connect the appliance-side cable for the lighting.



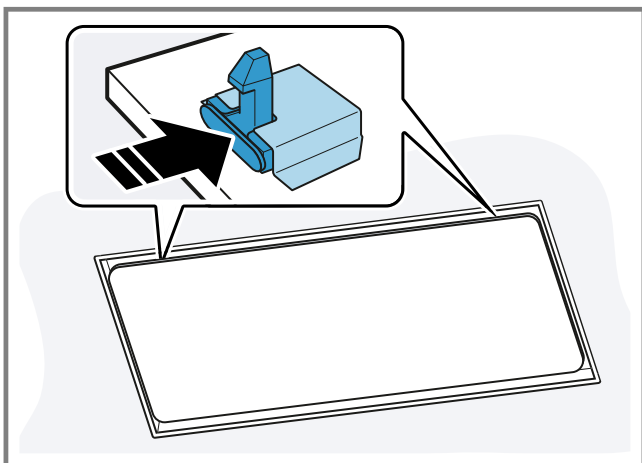
5. Swing the filter cover up and ensure that it engages.
6. Connect the appliance to the power supply.

Removing the appliance

⚠ WARNING – Risk of injury!

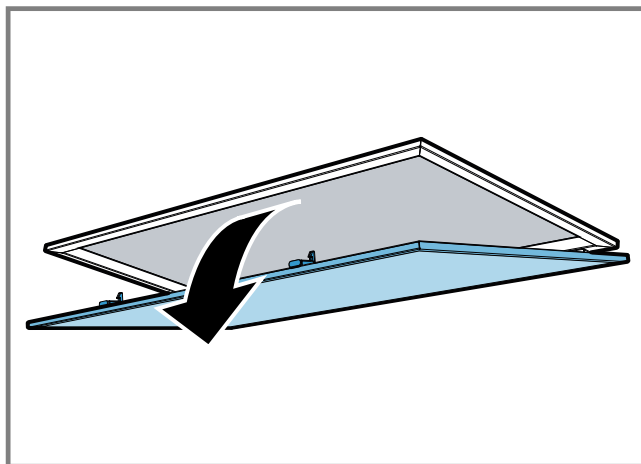
- Components inside the appliance may have sharp edges.
 - ▶ Wear protective gloves.
- Risk of injury when opening and closing the hinges.
 - ▶ Keep your hands away from the hinges.
- The appliance is heavy.
 - ▶ To move the appliance, two people are required.
 - ▶ Use only suitable tools and equipment.

1. Disconnect the appliance from the power supply.
2. Press the lock on the filter cover.

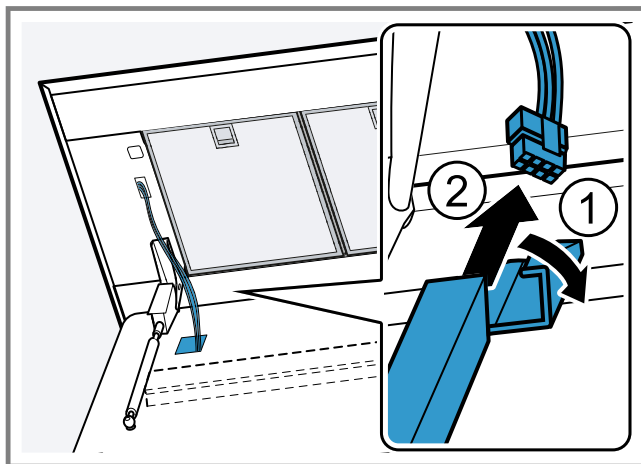


To prevent the filter cover from swinging down suddenly, hold onto the filter cover firmly with two hands.

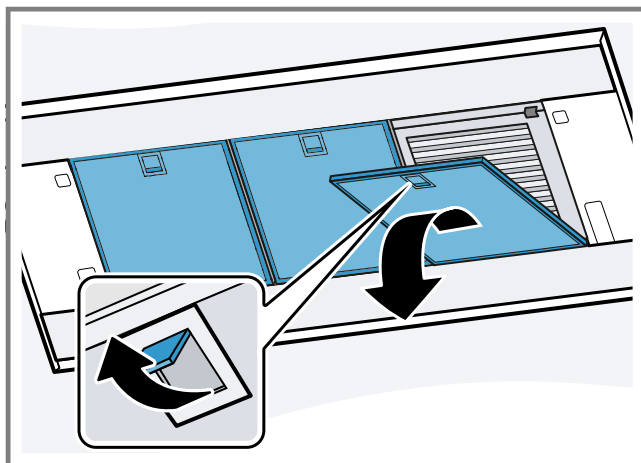
3. Open the filter cover by pulling it downwards.



4. Swing down the filter cover.
Open the filter cover fully and without pulling on it.
5. Remove the appliance-side cable for the lighting.

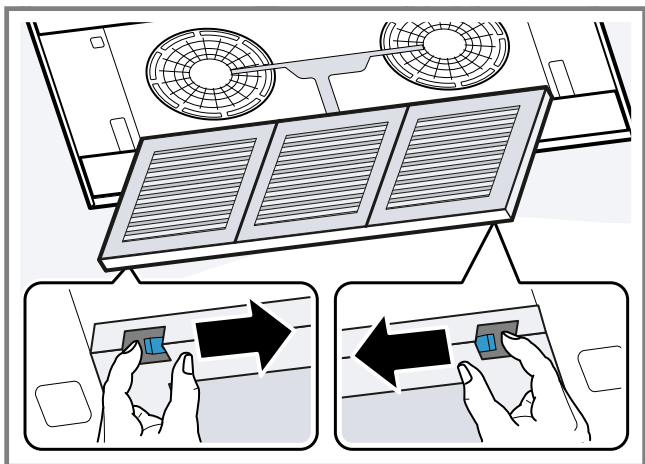


6. Undo the screws on the hinges up to approx. 7 mm.
Do not loosen them fully.
7. Unhook and remove the filter cover.
8. Remove the grease filters.



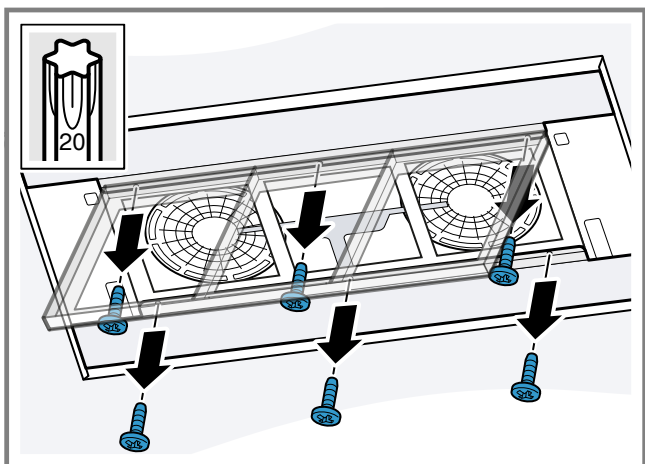
To avoid causing damage, do not bend the grease filters.

9. Open the odour filter cartridge.

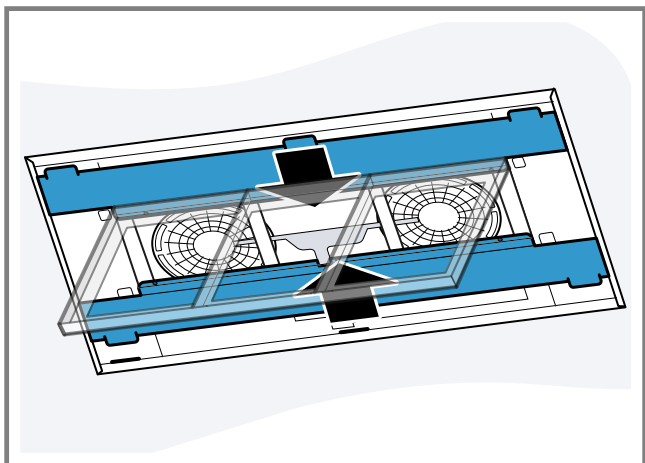


10. Remove the odour filter.

11. Loosen the screws on the side covers.

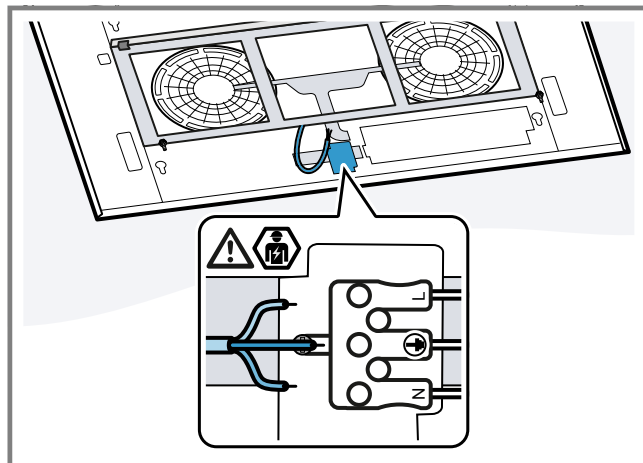


12. Remove the side covers.

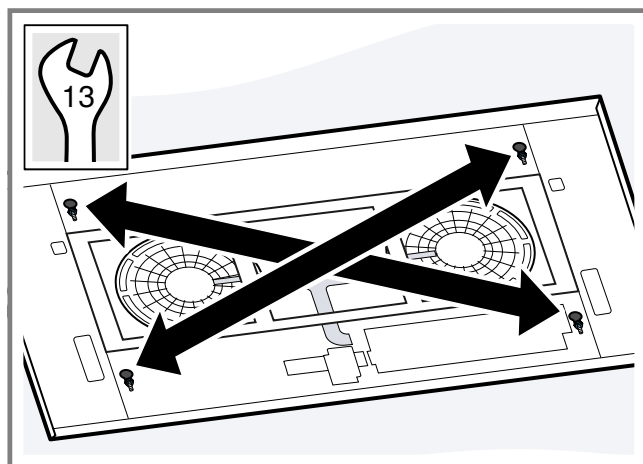


13. Close the odour filter cartridge.

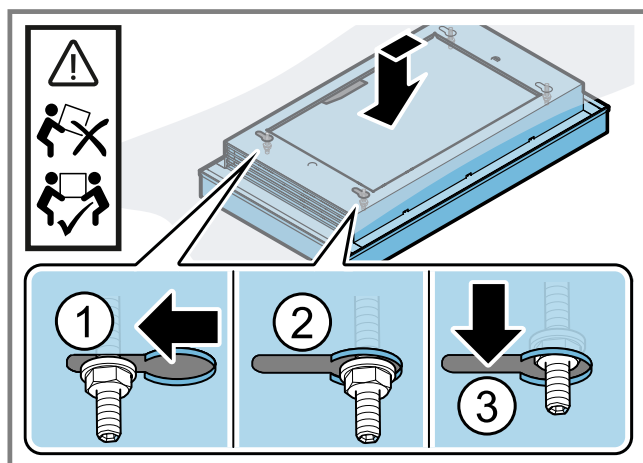
14. Loosen the cable that is provided on-site from the terminal clamp.



15. Carefully loosen the diagonally opposite screws.



16. Disconnect the appliance from the key hole opening.



17. Slowly take the appliance down.



A series of horizontal lines for writing, starting from the top right of the pencil icon and extending across the page.



A series of horizontal lines for writing, starting from the top right of the pencil icon and extending across the page.



REGISTER YOUR PRODUCT
ONLINE NEFF-HOME.COM

Constructa-Neff Vertriebs-GmbH
Carl-Wery-Straße 34
81739 München
GERMANY



9001521594
en
(000226)