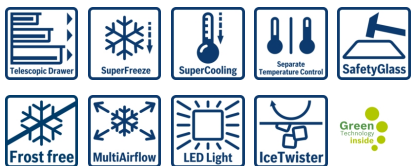


Serie | 4 Side-by-Side

**KAN92VI35**  
**American-style fridge freezer**  
**Stainless Steel EasyClean**  
**door and chrome inox metallic**  
**side panels.**



**A++**

**The A++ NoFrost side-by-side fridge-freezer with indoor electronics: saves you from defrosting - cools very efficiently.**

- **Energy efficiency class A++:** cools especially efficiently.
- **NoFrost:** never defrost again, thanks to perfect protection from ice formation - that saves time and effort.
- **Indoor electronics:** modern display in the door - convenient to operate and read from outside.
- **LED Light:** illuminates the refrigerator evenly without glare, for the life of the appliance.

**Technical Data**

Construction type :	Freestanding
Door panel options :	Not possible
Height (mm) :	1756
Width of the product (mm) :	912
Depth of the product :	732
Net weight (kg) :	110.0
Connection rating (W) :	190
Current (A) :	10
Door hinge :	Left & Right
Voltage (V) :	220-240
Frequency (Hz) :	50-60
Approval certificates :	CE, Eurasian, VDE
Length of electrical supply cord (cm) :	240
Storage Period in Event of Power Failure (h) :	12
Number of compressors :	1
Number of independent cooling systems :	2
Reversible Door Hinge :	No
Number of Adjustable Shelves in fridge compartment (Stck) :	3
Shelves for Bottles :	No
EAN code :	4242002811215
Brand :	Bosch
Product name / Commercial code :	KAN92VI35
Energy efficiency :	A++
Energy consumption annual (kWh/annum) - NEW (2010/30/EC) :	389
Refrigerator Net capacity (l) - NEW (2010/30/EC) :	387
Freezer Net capacity (l) - NEW (2010/30/EC) :	217
Frost free system :	Fridge and freezer
Temperature rise time (h) :	12
Freezing capacity (kg/24h) - NEW (2010/30/EC) :	12
Climate class :	SN-T
Noise level (dB) :	43
Installation typology :	N/A

**Included accessories**

1 x egg tray



## Serie | 4 Side-by-Side

### KAN92VI35

**American-style fridge freezer  
Stainless Steel EasyClean door and chrome  
inox metallic side panels.**

**The A++ NoFrost side-by-side fridge-freezer  
with indoor electronics: saves you from  
defrosting - cools very efficiently.**

#### Performance

- Energy efficiency class: A++ (389 kWh per year). Actual consumption will depend on how the appliance is used and where it is located.
- Total net capacity: 604 litres
- Net fridge capacity: 387 litres
- Net freezer capacity: 202 litres
- Noise level dB(A) re 1 pW: 43
- Climate class SN-T (suitable for ambient temperatures between 10 to 43°C)

#### Design features

- Stainless Steel EasyClean door and chrome inox metallic side panels.
- Interior design with metal applications
- Integrated vertical handle
- No Frost
- Automatic defrost fridge
- Two separate cooling circuits allow independent temperature control and prevents the transference of humidity between the fridge and freezer cavity
- MultiAirflow system - improves circulation of air around the fridge
- Bright interior LED fridge light
- Removable magnetic door seals - easy to clean
- Optical and accoustical
- Freezer malfunction warning signal: optical and accoustical

#### Freshness System

##### Additional features

- 4 safety glass shelves in fridge compartment of which 3 are height adjustable
- Freezing capacity in 24 hours: 12 kg
- Maximum freezer storage time in power failure: 12 hours
- Left hinged, Right hinged door
- Height adjustable front feet

#### Functions

- Separate, electronic temperature control with LED display
- SuperCool function with automatic deactivation
- SuperFreezing function with automatic deactivation
- Optical and accoustical
- Freezer malfunction warning signal: optical and accoustical warning system
- Holiday mode - saves energy when you're away a longer period of time

#### Key features - Fridge section

- 1 VitaFresh drawer with humidity control - Fruits and vegetables stay fresh and vitamin-rich for longer.
- 1 MultiBox drawer on telescopic rails - Transparent drawer with a corrugated bottom, ideal for storing fruits and vegetables.
- Door trays in fridge door: 2 large and 2 small.
- 1 x egg tray
- 1 dairy compartment in door
- Bright interior LED fridge light

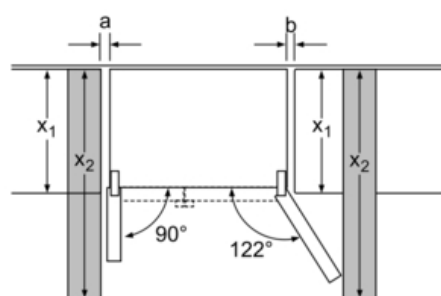
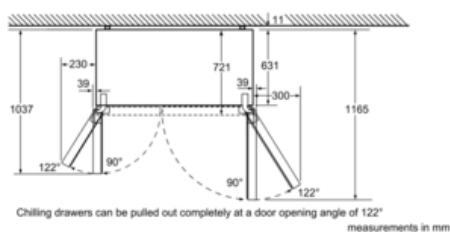
#### Key features - Freezer section

- 2 freezer drawers, drawers on telescopic rails (partially extendable)
- Twist ice dispenser in freezer
- Door trays in freezer door: 5
- To achieve the declared energy consumption, the distanceholders have to be used. As a result, the appliance depth increases by about 3.5 cm. The appliance used without the distance holder is fully functional, but has a slightly higher energy consumption.
- To achieve the declared energy consumption, the distanceholders have to be used. As a result, the appliance depth increases by about 3.5 cm. The appliance used without the distance holder is fully functional, but has a slightly higher energy consumption.
- Dimensions: 175.6 cm H x 91.2 cm W x 73.2 cm D

## Serie | 4 Side-by-Side

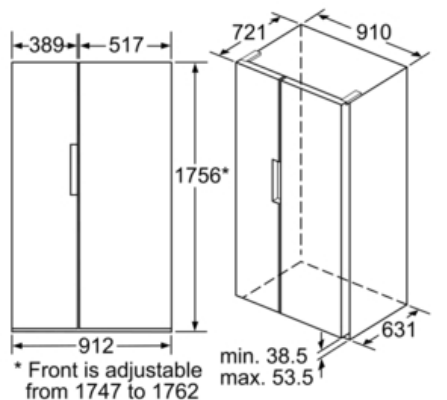
### KAN92VI35

**American-style fridge freezer**  
**Stainless Steel EasyClean door and chrome**  
**inox metallic side panels.**



$x_1$ (unit depth)	a	b
600	39	39
650	39	53
700	39	85
$x_2$ (wall)	39	300

measurements in mm



measurements in mm